



College of Tropical Agriculture and Human Resources
University of Hawai'i at Mānoa

Optimizing Yield and Quality of Hawaii-grown Turmeric

Collection and Evaluation of Curcuma Germplasm

Ted Radovich

J.P. Bingham, J. Calpito, K. Wong, E. Kirk, A. Ahmad

College of Tropical Agriculture and Human Resources
University of Hawai'i at Mānoa

Kevin Flanagan

SeaSons Organics LLC

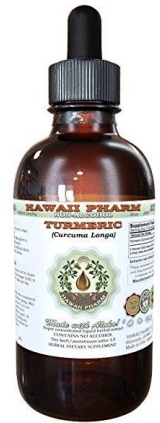
Historic Importance

- Food & Flavor
- Medicine
- Dye
- Religious
- Ornamental



Current Situation

- \$6.00/lb Farmgate (Hawai'i 2016)
- Production rapidly expanding (2018 estimate = 60-80 acres statewide)
- Local market easily saturated.
- Increased exports.
- Value addition.



Turmeric

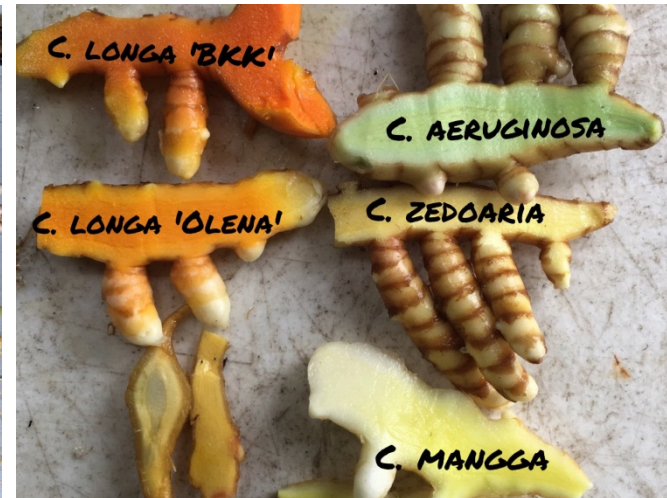
- Seasonal (April/May-February/March).
- 600 - 1,500 mm H₂O/season.
- Reported nutrient removal (*Ravindran et al., 2007*):
 - N: 16.5 kg/t
 - P₂O₅: 3.1 kg/t
 - K₂O: 44.5 kg/t
- Relatively low pest pressure.



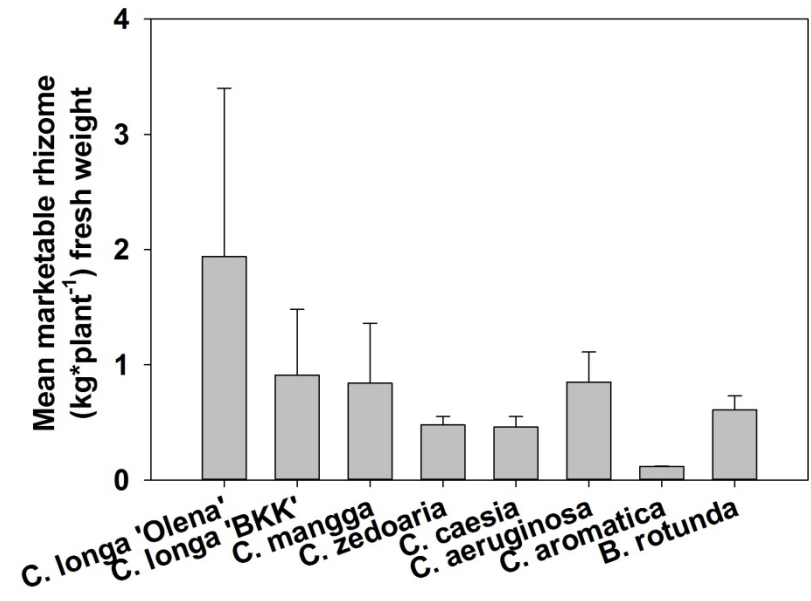
Turmeric, Aquaponic 2015-2016

- **Observational.**
- **Increase familiarity with local germplasm.**
- **Increase planting material.**

<http://www.hawaiianorganicginger.com/>



Turmeric, Terrestrial 2016-2017



Manual Harvest Sucks!!!



Field Trial 2017-2018

- Planted May 2017.
- Twelve locally collected accessions.
- Harvested January 2018.
- Data collected:
 - Yield
 - [Curcumin]







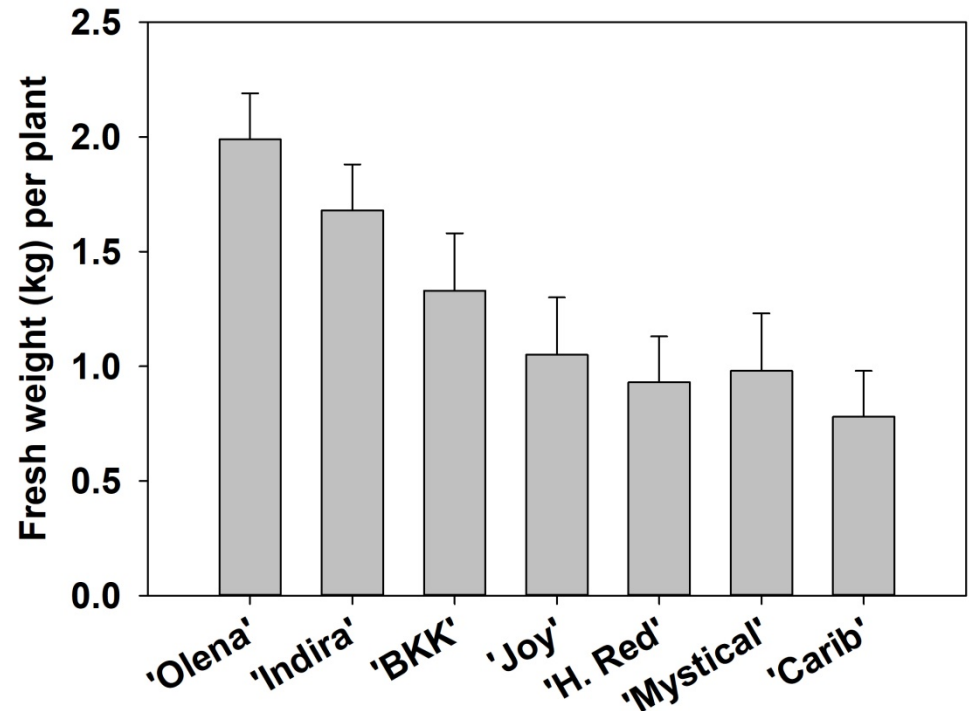






Yield of *C. longa*

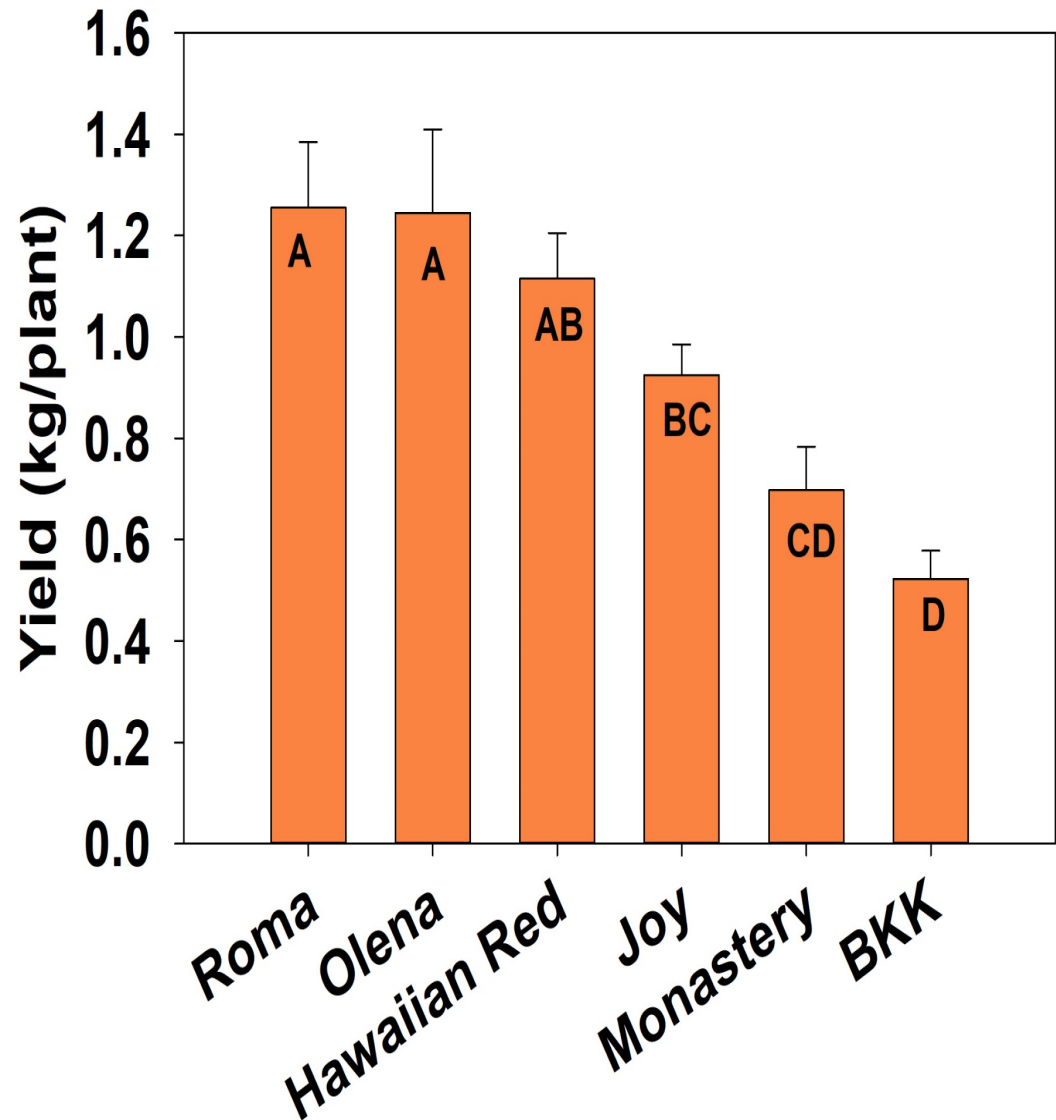
- Yields ranged between 0.75 – 2.0 kg of cleaned, marketable fingers per plant.
- Estimated @ ~ 16 - 43 t/ha.
- Reported commercial yield = 13 to 35 t/ha of fresh turmeric.
- Other attributes besides yield important.





Kauai yield of *C. longa* – 2020 harvest

- Yields ranged between 0.38 – 1.66 kg of cleaned, marketable fingers per plant.
- Estimated @ ~ 8 - 35 t/ha.
- Reported commercial yield = 13 to 35 t/ha of fresh turmeric.
- Other important attributes?

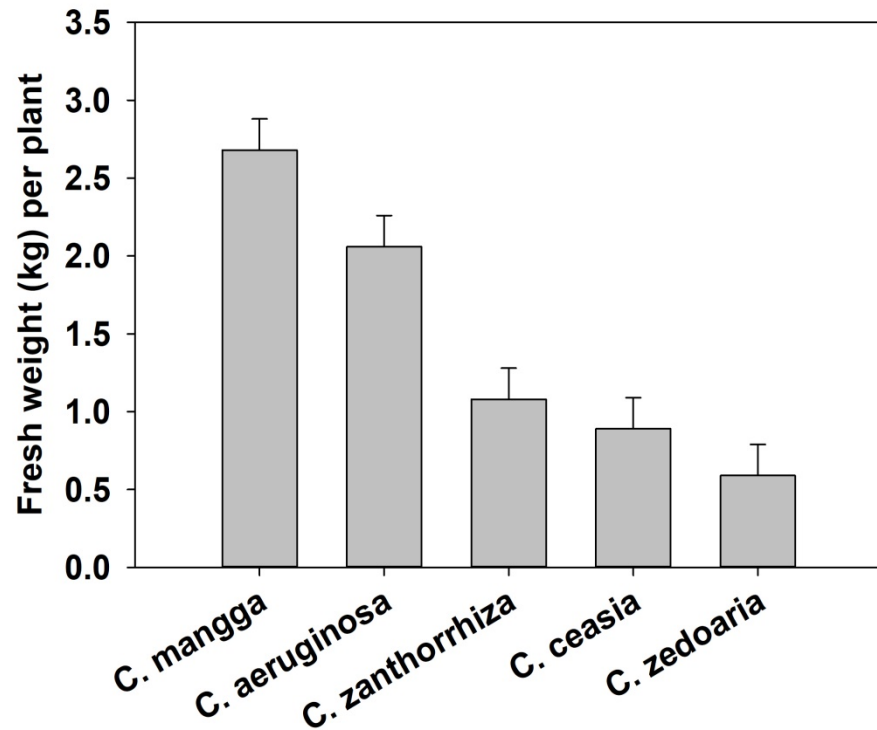


Yield of *C. longa*

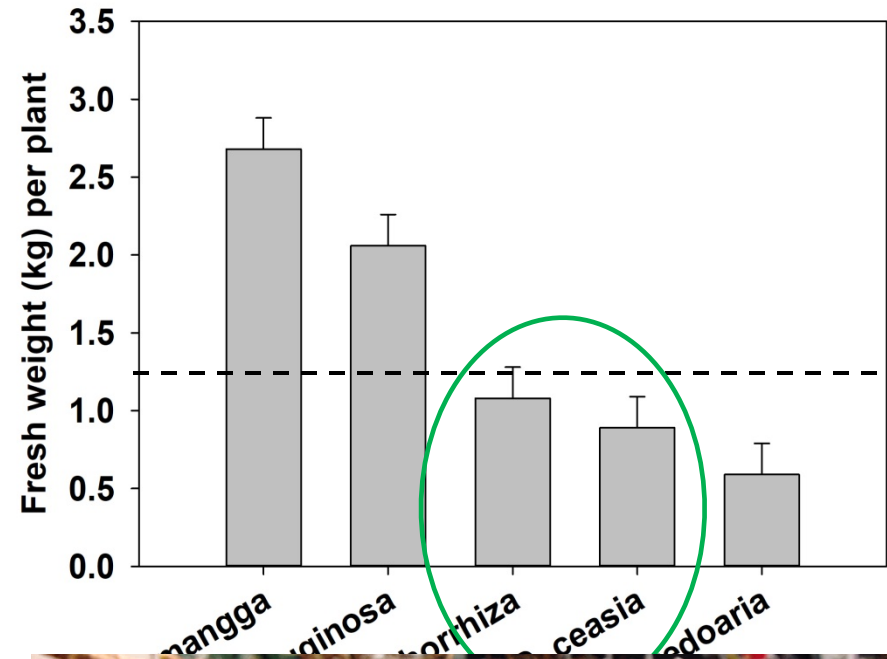
- Yields ranged between 0.75 – 2.0 kg of cleaned, marketable fingers per plant.
- Estimated @ ~ 16 - 43 t/ha.
- Reported commercial yield = 13 to 35 t/ha of fresh turmeric.
- Other attributes besides quality important.



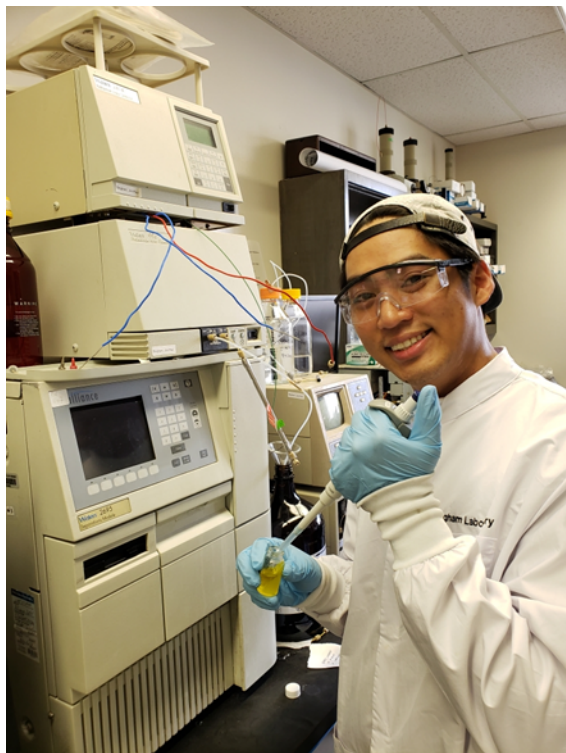
Yield of other species



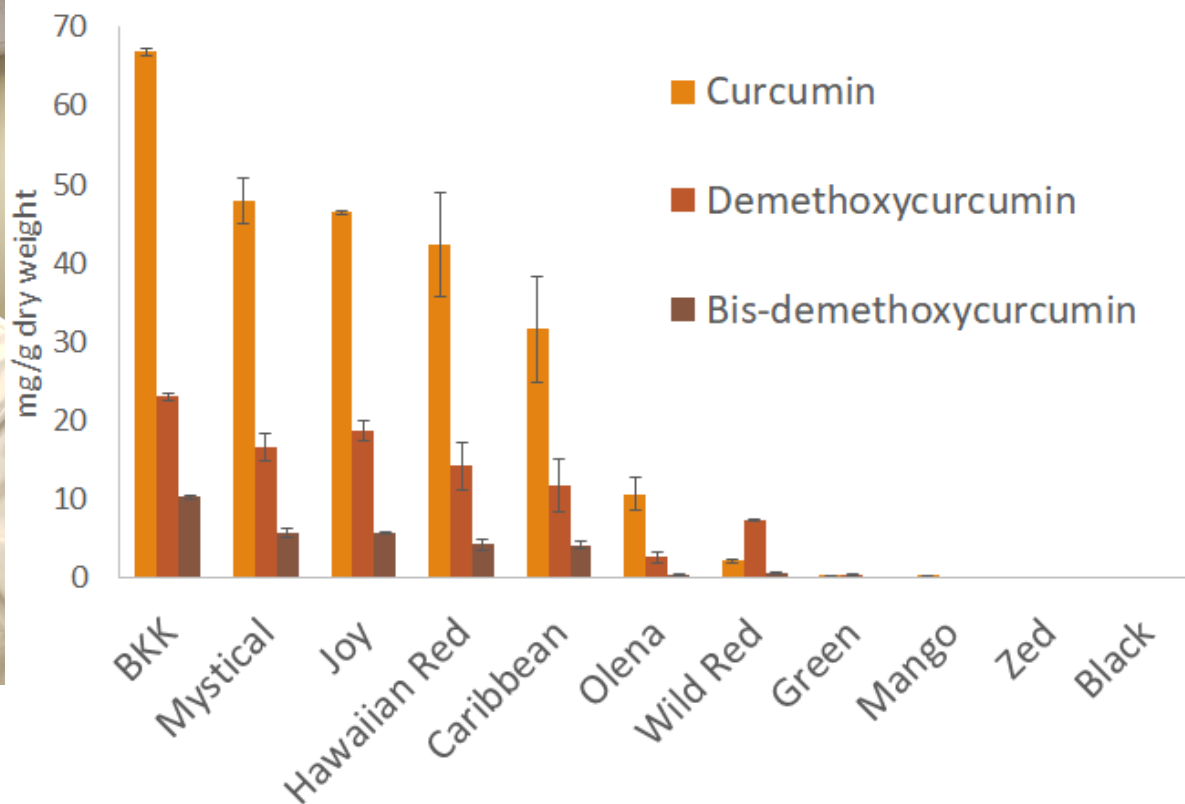
Yield of other species



HPLC Analysis of Curcuminoids



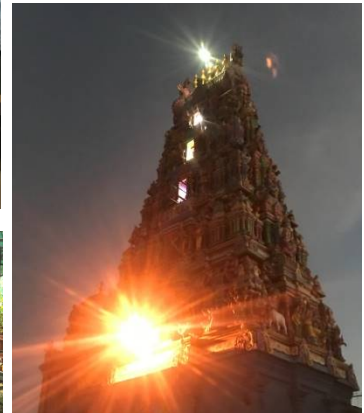
Major Curcuminoid Content of 2018 Turmeric



#Turmerictrail2018

Singapore-India-Myanmar-Thailand

3 February – 5 March, 2018



Singapore Botanic Gardens



Singapore Botanic Gardens



Singapore Gardens by the Bay



Import Permits & Phytosanitary Certificates



India, Kerala





India, Erode (Tamil Nadu)









சாந்திரன் டீல்ஸ் பிரைவட் லிமிடெட்
சென்னை
Ph : 04204 298235

சாந்திரன்



Sittilingi





Karnataka







Myanmar



Aquaponic Grow-Out



Aquaponic Grow-Out



Current field trial 2018-2019

- Mechanized planting
June 2018.
- Increased # of local *C. longa*.
- Fertilizer response trial
using 'Hawaiian
Red' (0, 100, 200, 400
lb N/a).
- Anticipated harvest
March 2019.
- Demonstrate
mechanical planting/
harvesting.





Mahalo



SeaSons
ORGANICS



