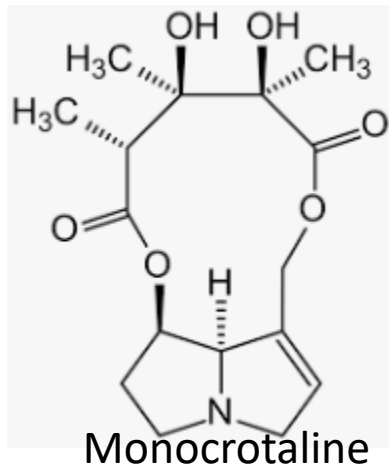




Trichogramma
wasps



Lycaenidae
butterflies



Sunn hemp (*Crotalaria juncea*) 'Tropic Sun'

Large amount of
biomass – adds
organic matter=
Soil builder

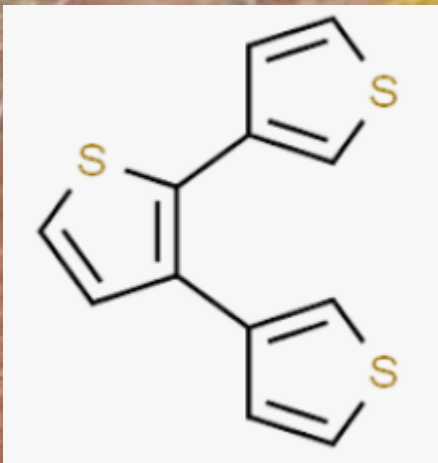
Nitrogen fixer,
excellent
green manure

Poor host to root-
knot and reniform
nematodes

Attract Lycaenidae
butterflies which
attracts
Trichogramma wasps

Produce allelopathic
cpd (monocrotaline)
against nematodes
when soil incorporated

Enhance
nematode-
trapping fungi



α -terthiinyne

French marigold (*Tagetes patula*) cv Nemagone

Root leachate is suppressive to plant-parasitic nematodes

Resistant to both root-knot and reniform nematodes.

Insectary plant: attract beneficial insects.

Moderately tolerant to salinity stress

Can tolerate slightly acidic soil but not below pH 5.5

Velvet Bean (*Mucuna pruriens*)



Large amount of biomass – adds organic matter = Soil builder.

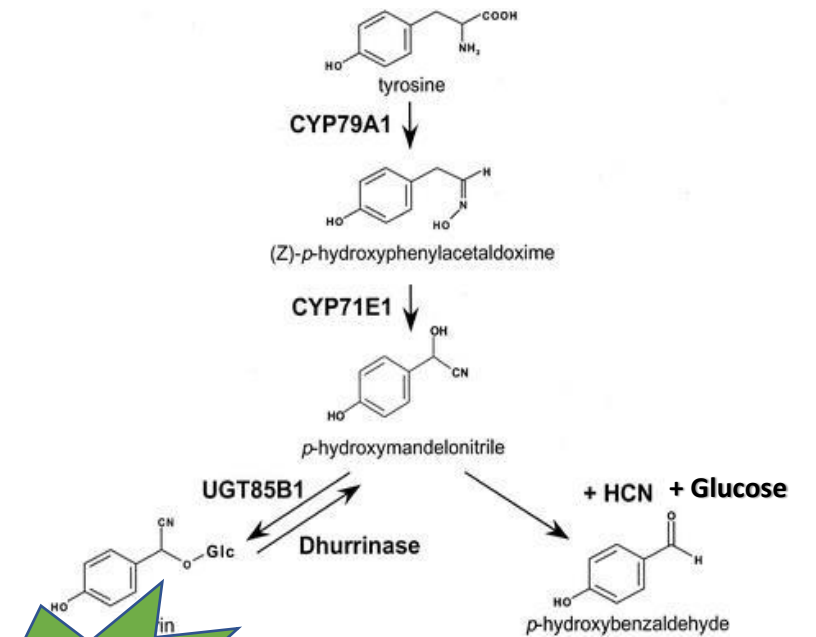
drought tolerant, and good nitrogen fixer, excellent green manure.

Poor /non-host to root-knot and reniform nematodes

Produce allelopathic cpd against nematodes when soil incorporated

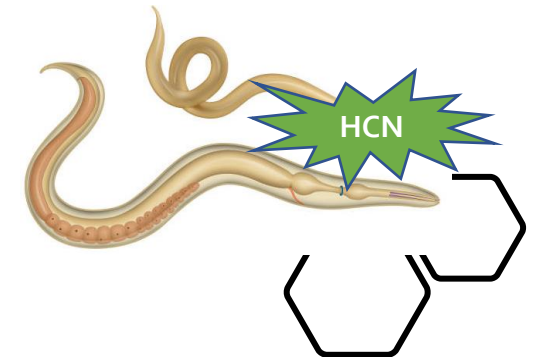
Good ground cover, erosion and weed control

Adapted to broad range of pH (5-8)



Dhurrin

Busk and Moller, 2002



Sorghum 'NX-D-61'/Sudangrass 'Pipper'

Large amount of biomass – adds organic matter = Soil builder.

Deep root system – improve soil tilth, drought tolerant, scavenge nutrient.

Poor /non-host to *Meloidogyne incognita*.

Root leachate (sorgoleone) is weed suppressive

Dual purpose cover crop (forage, grain, energy crop)

Tolerate high and low soil pH