



Tomato Yellow Leaf Curl Virus

***Data reflects the harvest period of 6/29/10-7/29/10

Data is still being collected and tabulated for a final report

Steve Fukuda, Jari Sugano, Mike Melzer, Ted Radovich, Susan Migita, Tom Miyashiro and Ted Goo
University of Hawaii At Manoa

Seeds generously donated by Jeff Sais of Seminis Seed Company, Zeraim Gedera and
University of Hawaii CTAHR, Agricultural Diagnostic Service Center

Chart 1: Summary of Marketable Yield for 6/29/10-7/29/10

							Estimated	
			Total Marketable	Grade A		Estimated	Wholesale Price / Acre	
Variety Name	Type	Seed Source	Yield (lbs.)	Yield (lbs.)	Yield per Plant	Yield per Acre	\$0.77/ lb	\$0.99/ lb
Adonis	Determinate	Seminis	250	195	6.2	18005	13864	17825
Tygress	Determinate	Seminis	188	165	4.7	13649	10510	13512
PIK Ripe 461	Determinate	Seminis	185	159	4.6	13358	10286	13225
Sunchaser	Determinate	Seminis	102	69	2.6	7550	5814	7475
Sunsugar (Yellow Cherry)	Indeterminate	Seminis	74	74	1.9	5518	4249	5462
Toqui	Determinate	Seminis	55	51	1.4	4066	3131	4025
Tovi Roca	Indeterminate	Zeraim Gedera	54	46	1.3	3775	2907	3737
VT-62966	Indeterminate	Zeraim Gedera	52	44	1.3	3797	2924	3759
VT-62940	Indeterminate	Zeraim Gedera	51	37	1.3	3670	2826	3633
Xaman (Roma Type)	Determinate	Zeraim Gedera	40	35	1.0	2908	2239	2879
Kewalo	Determinate	UH CTAHR	26	10	0.7	1909	1470	1890
Tovi Star	Indeterminate	Zeraim Gedera	22	19	0.6	1626	1252	1610

Estimated 2904 plants per acre, at 5 foot spracing per row, and 3 foot spacing between plants

Wholesale prices based on November 2009, HDOA Market Report

Chart 2: Summary of Weight (lbs.)/ Fruit

Variety Name	Weight / Fruit
Toqui	0.56
Tygress	0.50
PIK Ripe 461	0.50
Adonis	0.40
Tovi Roca	0.38
Sunchaser	0.36
Xaman	0.36
Tovi Star	0.31
VT-62940	0.30
VT-62966	0.30
Kewalo	0.21
Sunsugar	0.02

Summary of Total Marketable Fruit Count

Variety Name	Total Marketable Count
Sunsugar	3312.0
Adonis	620.0
Tygress	373.0
PIK Ripe 461	368.0
Sunchaser	281.0
VT-62966	172.0
VT-62940	166.0
Tovi Roca	142.0
Kewalo	125.0
Xaman	112.0
Toqui	98.0
Tovi Star	73.0

Yellow Cherry Type

TYLCV: Marketable Yield Data

Harvest period of 6/29/10-7/29/10

■ Total Marketable Yield (lbs.)
 ■ Grade A Yield (lbs.)

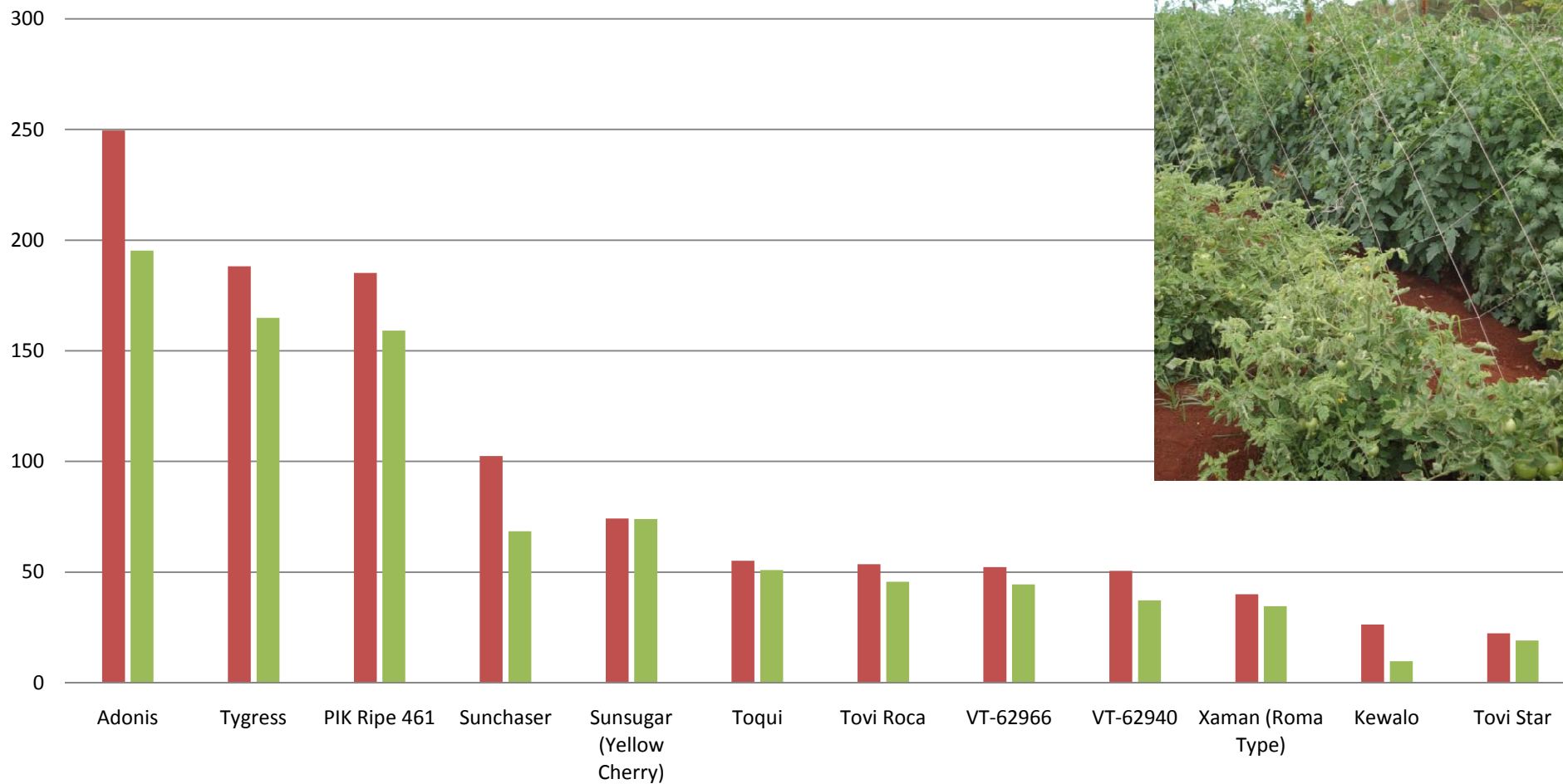


Chart 1

Summary of Weight (lbs.)/ Fruit Harvest period of 6/29/10-7/29/10

Chart 2

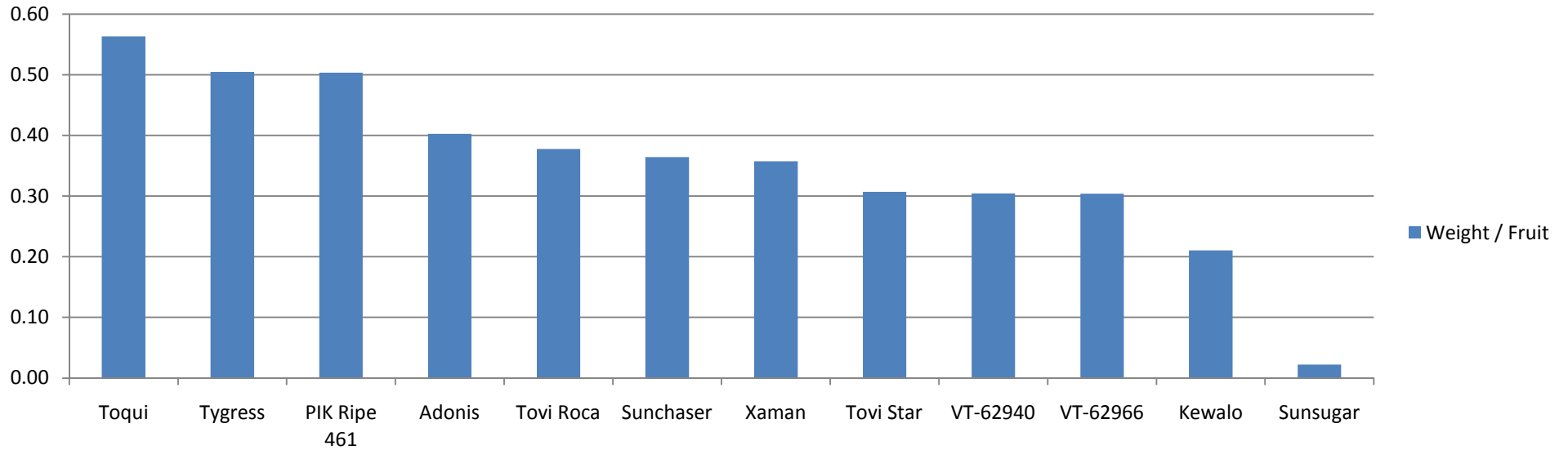


Chart 3

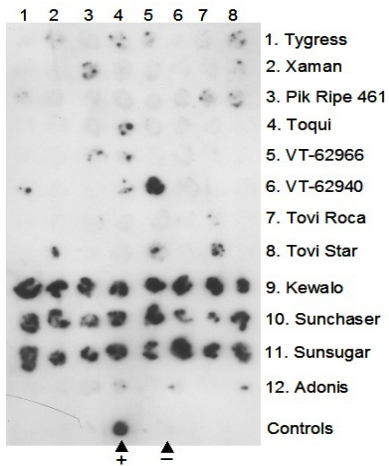


Chart 3: Visual Indicator of TYLCV Detected in Plant Samples

Two plants from four reps (2x4=8) were sampled for each of the twelve varieties.
 The dark spots indicate the presence of virus.







9 Kewalo



10 Sunchaser



Sunsugar



12 Adonis



Tygress

Xaman

Pik Ripe 461

Toqui

VT-62966

VT-62940

Tovi Roca

Tovi Star

Kewalo

Sunchaser

Sunsugar

Adonis

LIFETIME