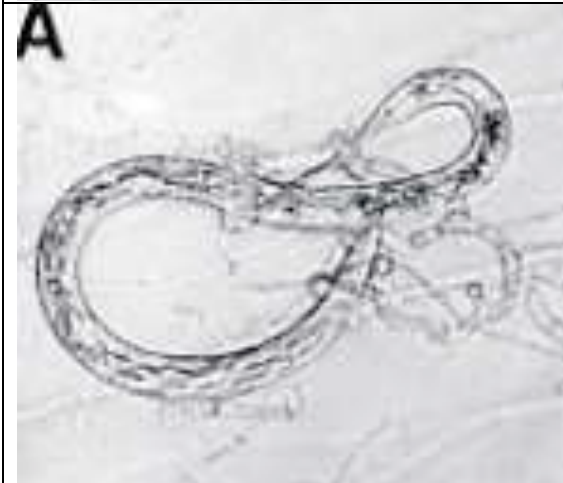


*Dactylella megalospora* trapping a *Pratylenchus zae* with 3-dimensional network. Conidia broadly fusoid, elongate-ellipsoidal or obovoid, with 2 to 4- septate, median cell the largest, conidiophore simple or with 3-5 spurs at apex (picture is courtesy of Esser).



*Dactylella megalospora* trapping a *Radopholus similis* (picture is courtesy of Esser).



*Dactylella megalospora* trapping a *Meloidogyne sp.* (picture is courtesy of Esser).



*Dactylella megalospora* trapping a *Rotylenchulus reniformis* (picture is courtesy of Esser).



*Dactylella megalospora* trapping a *Hemicriconemoides wessoni* (picture is courtesy of Esser).