



Attraction sites for zoospores of *Catenaria* on nematode host (Picture is courtesy of Esser, Esser and Ridings, 1973).



Zoosporangia of *Catenaria* in a nematode body (picture is courtesy of Esser).



Zoosporangia of *Catenaria* forming evacuation tubes where zoospores are released (picture is courtesy of Esser).



*Catenaria anguillulae* on *Mesocriconemella*  
(picture is courtesy of Esser).



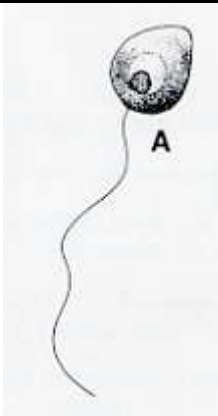
*Catenaria anguillulae* on *Hemicriconemoides*  
with zoospore released (picture is courtesy of  
Esser).



Zoospores of *Catenaria anguillulae* on stylet  
tip of *Pratylenchus* (picture is courtesy of  
Esser).



Rotifer containing zoosporangia of *Catenaria anguillulae* (picture is courtesy of Esser).



*Catenaria* belongs to Blastocladales. Zoospores are posteriorly unflagellated, whiplash type of flagella (drawing is courtesy of Esser).