

LADYBEETLES OF HAWAII

Jane Tavares, Koon-Hui Wang & Jari Sugano

Ash-grey Ladybeetle
(*Olla v-nigrum*)



Food: Primarily
psyllids,
occasionally aphids
Seen on: Papaya

Black Chilocorus
(*Chilocorus nigrus*)



Food: Armored
scale, some soft
scale

Common Spotted Ladybeetle
(*Harmonia conformis*)



Food: Primarily
psyllids,
occasionally
aphids

Metallic Blue Ladybeetle
(*Curinus coeruleus*)



Food: Scale,
aphids, psyllids,
mealybug, whitefly
Seen on: Koa
haole

Three-striped Ladybeetle
(*Brumoides suturalis*)



Food: Aphid, whitefly,
psyllids, scale,
mealybug, and mites
Seen on: Cilantro,
cosmos, and
crimson clover

Twenty-spotted Ladybeetle
(*Psyllobora viginti taedata*)



Food: Powdery
mildew
Seen on: Zucchini,
sunn hemp,
papaya

Variable Ladybeetle
(*Coelophora inaequalis*)



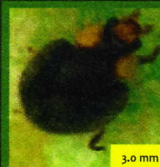
Food: Aphids,
including
milkweed aphid
Seen on: Crimson
clover

Variable Ladybeetle
(*Coelophora inaequalis*)

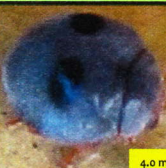


Food: Aphids,
including milkweed
aphid
Seen on: Buckwheat,
cilantro, cosmos,
crimson clover

Yellow Shouldered Ladybeetle
(*Apolinus lividigaster*)



Food: Aphids
including milkweed
aphid
Seen on: crown
flower, cosmos



Globe-marked Ladybeetle
(*Azya orbiger*)

Food Source: Soft scale,
occasionally aphids and mealybug
Seen on: A'ali'i (*Dodonaea viscosa*)



Minute Two-spotted Ladybeetle
(*Diomus notescens*)

Food Source: Aphids, mealybug,
and some caterpillar eggs
Seen on: Buckwheat, marigold,
fennel, cosmos, crimson clover



(*Scymnus sp.*)

Food Source: Aphids
Seen on: Buckwheat, fennel,
cosmos, crimson clover



Seven-Spotted Ladybeetle
(*Coccinella septempunctata*)

Food Source: Aphids, thrips,
whitefly, psyllids, leafhoppers,
moths, beetles
Seen on: Cilantro, fennel, dill



(*Stethorus sp.*)

Food Source: Mites
Seen on: tea plants, papaya



Ten-Spotted Ladybeetle
(*Bothrocalvia pupillata*)

Food Source: Aphids, whitefly,
psyllids, thrips
Seen on: Mamaki



Number in small box indicates actual size of adult beetle



Sustainable Pest
Management Lab

Acknowledgments: This project is partially funded by CTAHR Hatch Project # HAW09022-H
Photo Credits: Jane Tavares and Koon-Hui Wang

For more information about the report of these ladybeetles in Hawaii, please visit: Nishida, G. M. 2002. Hawaiian terrestrial
arthropod checklist, 4th edition. Bishop Museum, Honolulu, HI.

College of Tropical Agriculture and Human Resources
University of Hawaii at Manoa

