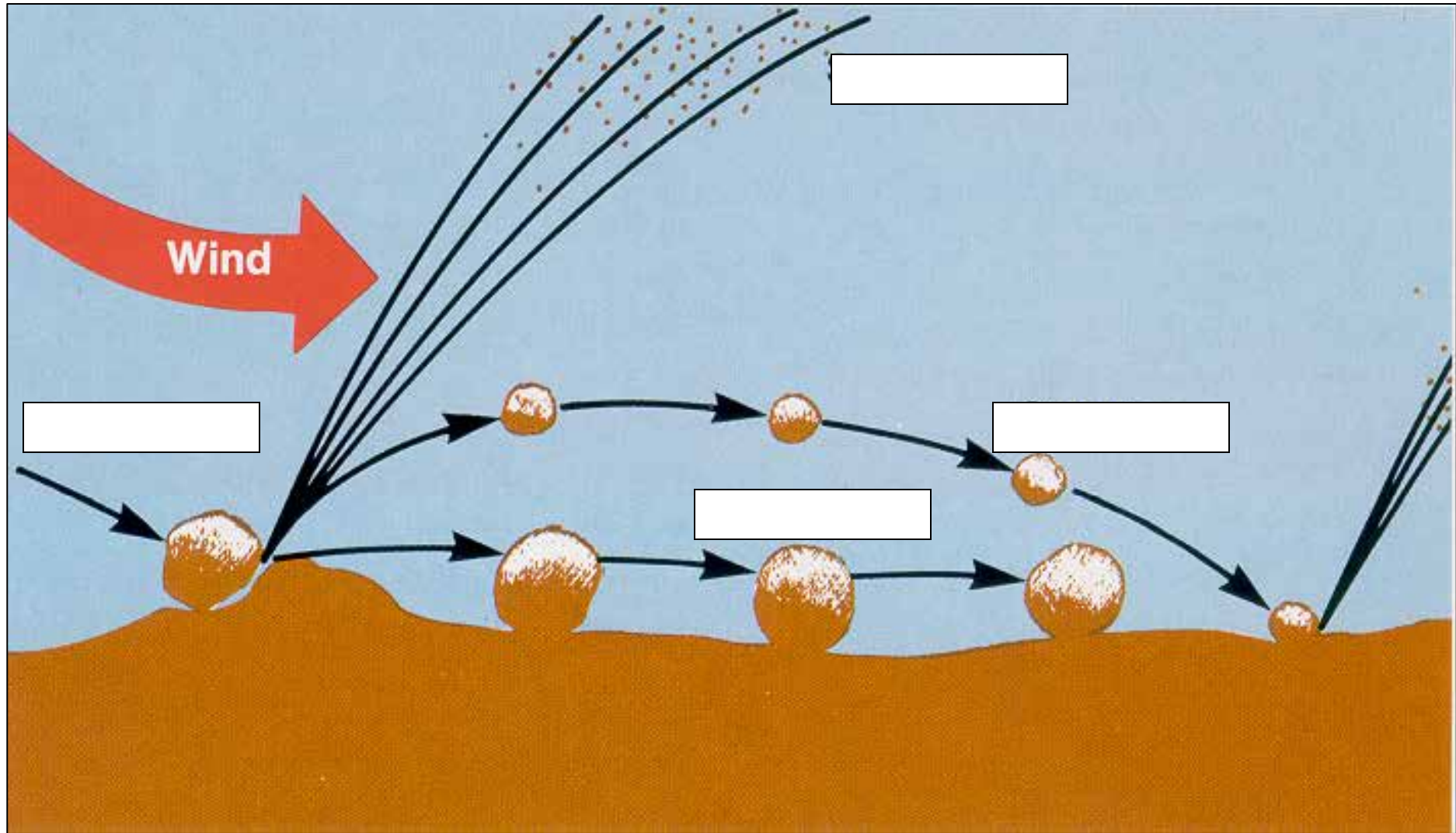


Wind Erosion

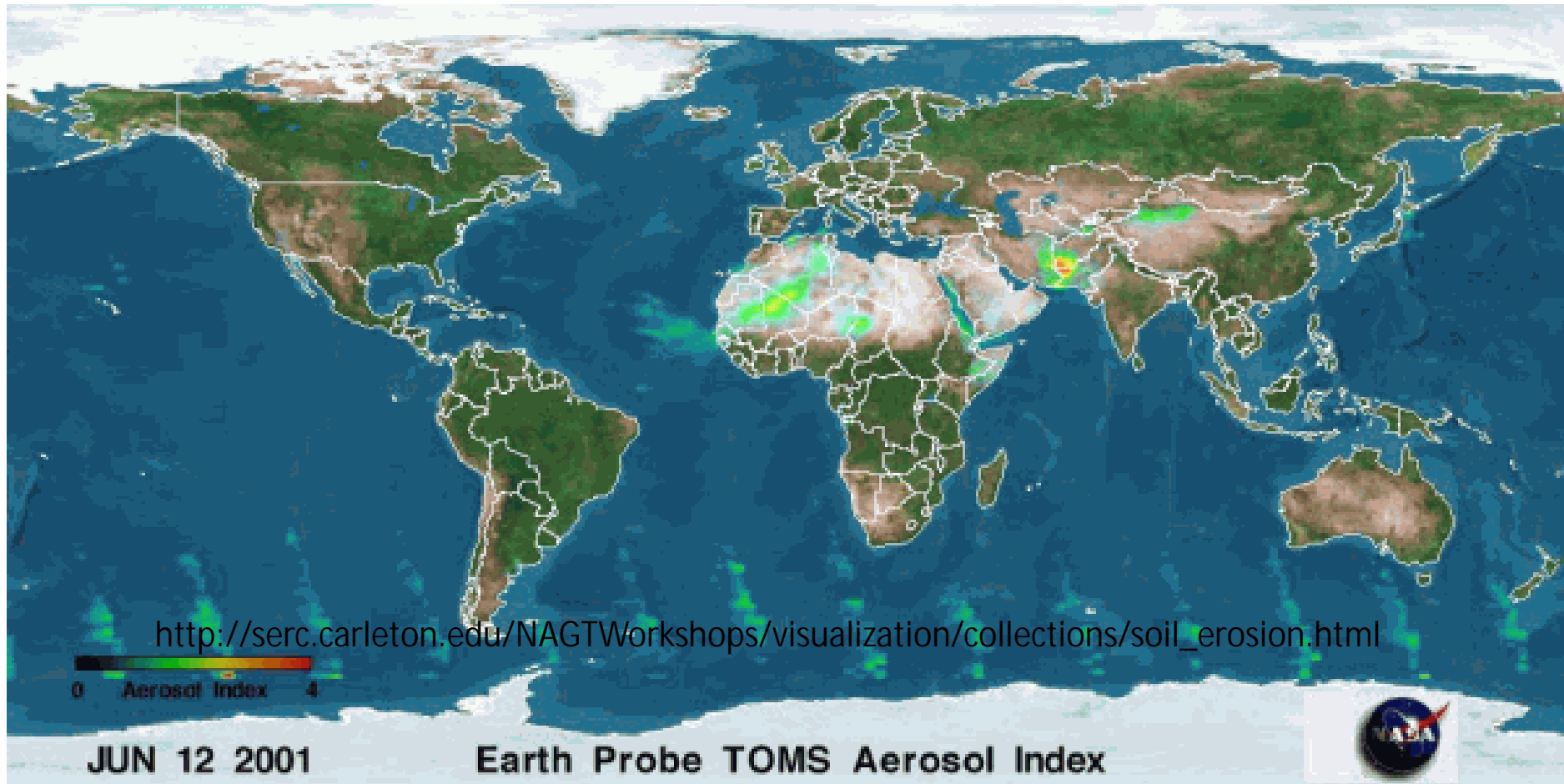


Soils: A renewable resource.

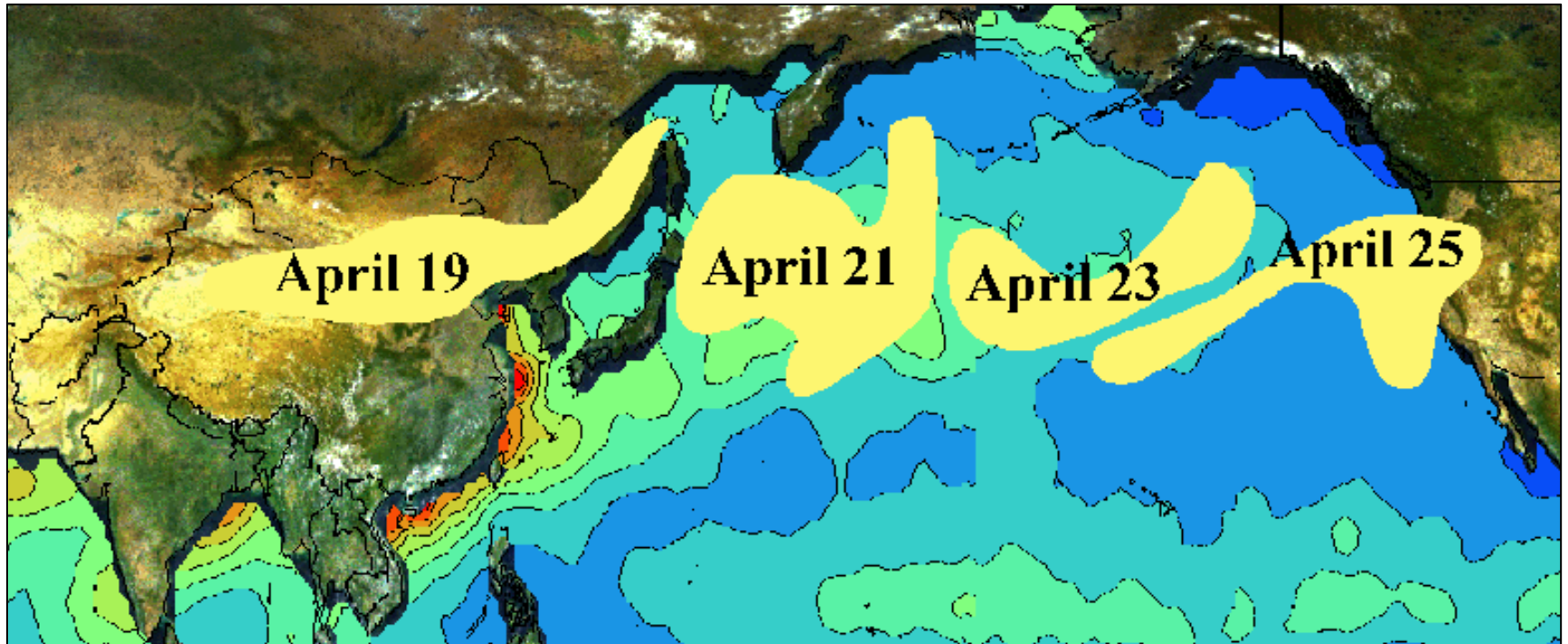


Types of Wind Erosion

Soils: A renewable resource.



Soils: A renewable resource.



http://www.mbari.org/chemsensor/HawaiiTransits/MBARI_SOLISindex.htm



Photo: Carl Parkes
<http://friskodude.blogspot.com/2010/05/dust-storm-in-china.html>

WEQ

$$E = f(I', K', C', L', V)$$

Where:

E = Estimated Avg. Annual Soil Loss (T/ac-yr)

I' = Soil Erodibility

K' = Soil Ridge Roughness

C' = Climate

L' = Width of field

V = Vegetative Cover

Wind Erosion BMPs

- 1) Conservation tillage
- 2) Barriers/Windbreaks
- 3) Moisture management
- 4) Soil amendments



(Photos courtesy of USDA NRCS)